



ARLINGTON POLICE DEPARTMENT

110 East 3rd Street
Arlington, WA 98223

Speed Enforcement Evaluator

Location:
20300 BLK 71st Ave NE

Total Percentage of
Enforceable Violations

GPS:
0' 0.0000 South
0' 0.0000 East

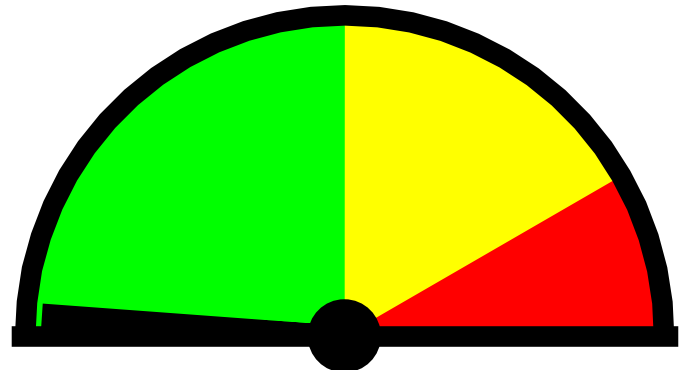
Closest Cross Street:
204th St NE

Analysis Dates:
Monday, June 24, 2019
Wednesday, June 26, 2019

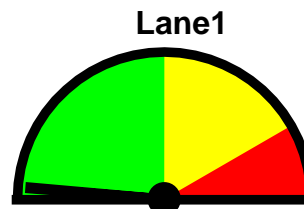
Equipment Used:
Covert Radar

Installed By:
Ventura

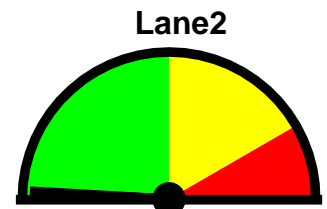
Requested By:
Absolute Manufacturing



Enforcement Tolerance: 10 MPH
Percentage Above Limit: 0.9%
Enforcement Rating: **LOW**



Percent Above Limit: 1.1%
Enforcement Rating: **LOW**



Percent Above Limit: 0.7%
Enforcement Rating: **LOW**

Combined

1-5	6-10	11-15	16-20	21-25	26-30	31-35	36-40	41-45	46-50	51-55	56-60	61-65	>65
0	86	224	361	827	647	180	20	2	0	0	0	0	0

85 percentile = 28

Lane1

1-5	6-10	11-15	16-20	21-25	26-30	31-35	36-40	41-45	46-50	51-55	56-60	61-65	>65
0	42	129	214	420	329	88	13	1	0	0	0	0	0

85 percentile = 28

Lane2

1-5	6-10	11-15	16-20	21-25	26-30	31-35	36-40	41-45	46-50	51-55	56-60	61-65	>65
0	44	95	147	407	318	92	7	1	0	0	0	0	0

85 percentile = 29