








# Arlington 2014 Preservation Plan

## Legend

-  Proposed preservation projects
-  Roads Requiring Work\*
-  Arlington City Limits
-  Marysville City Limits
-  State Highway
-  State Route
-  Streets

\*Does not include State roads like SR 530, SR 9 or SR 531 (172nd St NE)

Streams and waterbodies courtesy of Snohomish County Dept of Information Systems, December 2009.

Scale:

1 in = 2,250 feet

Date:

10/29/2013

File:

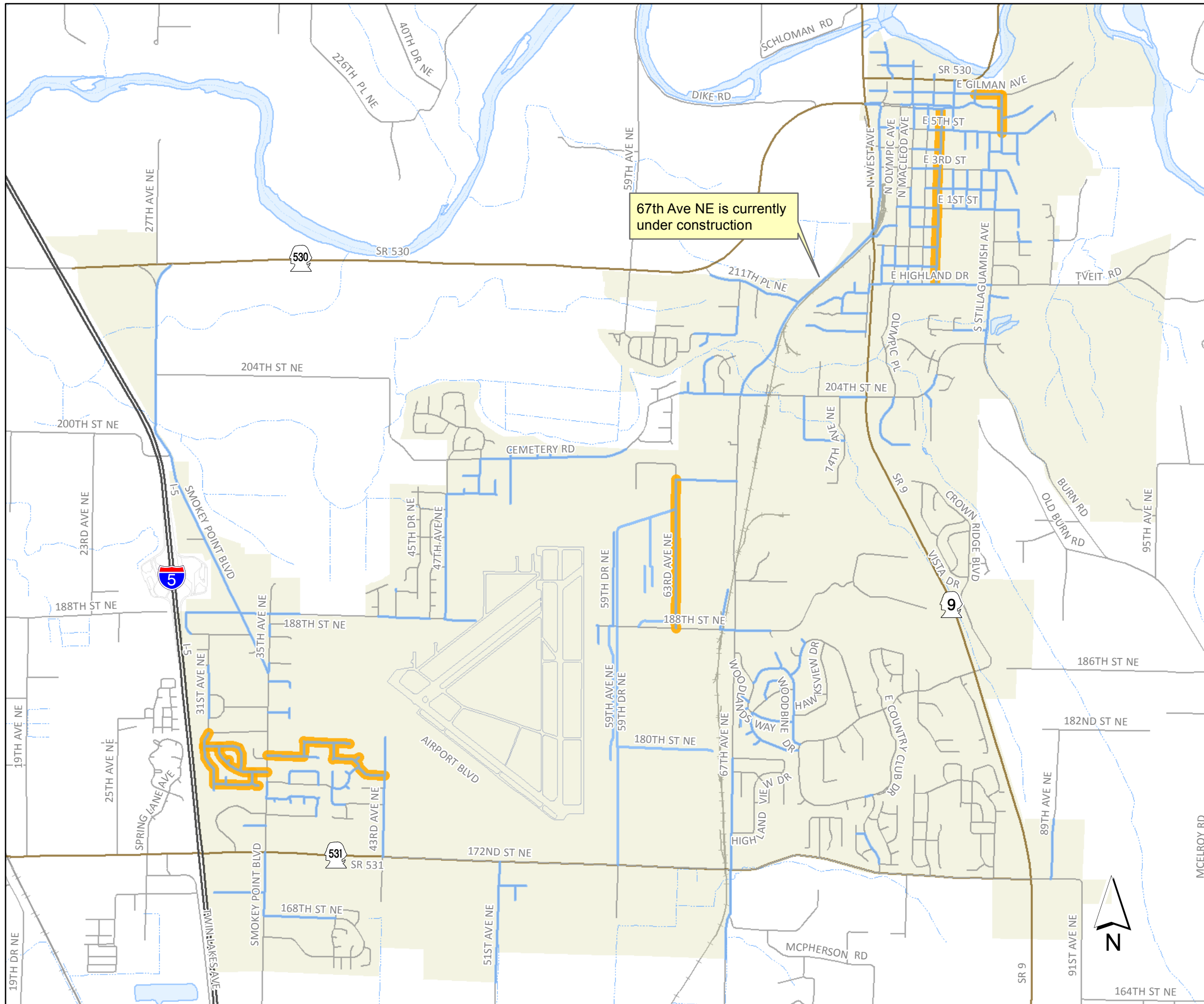
TBD2014Plan11X17\_13.mxd

Drawn by:

kdh



Maps and GIS data are distributed "AS-IS" without warranties of any kind, either express or implied, including but not limited to warranties of suitability for a particular purpose or use. Map data are compiled from a variety of sources which may contain errors and users who rely upon the information do so at their own risk. Users agree to indemnify, defend, and hold harmless the City of Arlington for any and all liability of any nature arising out of or resulting from the lack of accuracy or correctness of the data, or the use of the data presented in the maps.



67th Ave NE is currently under construction