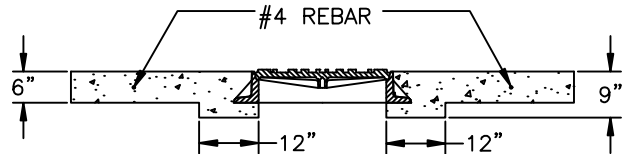
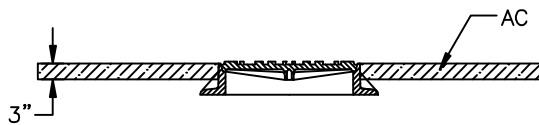


PAVED TRAFFIC AREAS

OUTSIDE PAVED TRAFFIC AREAS



NOTES:

1. CONCRETE SHALL CONFORM TO CURRENT STANDARDS AND SHALL BE 5.5 SACK MIX. (MINIMUM 3000-PSI 28-DAY STRENGTH)
2. WHERE DEPTH OF NECK EXCEEDS 26 INCHES, ADJUST MANHOLE TO GRADE BY INSERTING A NEW MANHOLE BARREL SECTION BETWEEN THE CONE AND EXISTING BARREL.
3. ADJUSTMENT RINGS/BLOCK, TOP OF CONE SECTION, AND BOTTOM OF IRON RING, SHALL BE WET STACKED IN 3/4" GROUT, PLASTER SMOOTH INSIDE AND OUT.
4. STEPS OR RUNGS SHALL BE ADDED AS NEEDED PER SS-040 AND SS-050.
5. PRECAST ADJUSTMENT RINGS SHALL BE CAST WITH GROOVE TO ALLOW FIELD INSTALLATION OF SAFETY STEP.
6. CONCRETE PERIMETER SEAL SHALL EXTEND TO 12 INCH MINIMUM OR 2 INCHES BELOW THE BOTTOM OF THE ADJUSTMENT RINGS OR BLOCKS.
7. SAWCUT ONLY. NO OVERCUTTING LIMITS OF PATCH.
8. IN NON-TRAFFIC AREAS (LANDSCAPED) THE CONCRETE PAD IS 4" THICK WITHOUT REINFORCEMENT.



APPROVED BY	L. OLIVE
DATE	07/31/2008
REF STAD SPEC	

DEPARTMENT OF PUBLIC WORKS
STANDARD DETAIL

MANHOLE PAD AND ADJUSTMENT

STANDARD DETAIL NUMBER
SS-070